

Motor Vehicle Registrations Western Australia November 1994

MAIN FEATURES

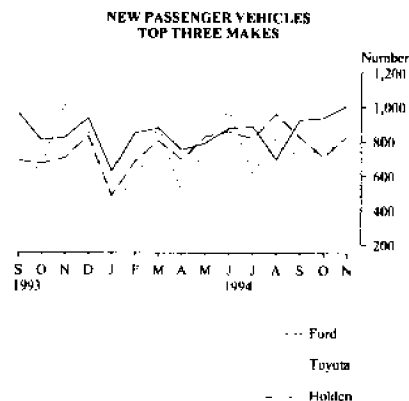
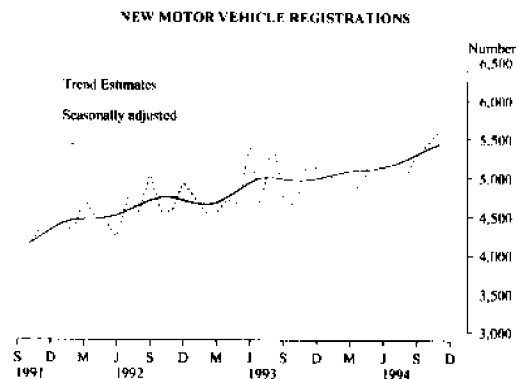
New motor vehicle registrations (excluding motor cycles) for November 1994 totalled 5,929, an increase of 10.7 per cent compared with October 1994. In seasonally adjusted terms, registrations rose by 2.9 per cent during this period. The trend estimate has risen steadily since October 1993 and is 9.2 per cent above the level in September 1993.

In original terms, registrations of new passenger vehicles for November 1994 increased by 6.4 per cent compared with October 1994 and other vehicles showed an increase of 29.7 per cent during this time.

Ford led the passenger vehicle market in November 1994 with 1,007 registrations (21.6 per cent). Holden, with 825 registrations (17.7 per cent) was next, followed by Toyota with 778 registrations (16.7 per cent).

Toyota continued its domination of the light commercial vehicle market with 406 registrations (37.9 per cent). Next came Holden with 214 registrations (20.0 per cent), followed by Ford with 166 registrations (15.5 per cent) and Mitsubishi with 115 registrations (10.7 per cent).

The leading passenger vehicle model for the month was the Ford Falcon/Fairmont with 15.1 per cent of the market. The Holden Commodore/Calais was next with 12.7 per cent and the Mitsubishi Magna and the Hyundai Excel each had 6.6 per cent.



INQUIRIES

- For further information about these statistics and the availability of related unpublished statistics, contact Ian Mackley on (09) 360 5242.
- For other inquiries, including copies of publications, please contact Information Services on (09) 360 5140.

TABLE 1 - NEW MOTOR VEHICLES (a) REGISTERED, WESTERN AUSTRALIA

Period (b)	Passenger vehicles	Light commercial vehicles	Rigid trucks	Articulated trucks	Non - freight carrying trucks (c)	Buses	Motor cycles	Total	Perth Statistical Division
1991-92	41,979	7,664	1,024	109	101	675	1,814	53,366	41,926
1992-93	45,567	9,581	1,009	125	84	757	2,117	59,240	46,593
1993-94	48,589	10,350	1,102	232	67	735	2,103	63,178	49,074
1993 - September	3,861	726	88	8	6	55	142	4,886	3,918
October	3,674	753	88	17	6	49	156	4,743	3,675
November	4,203	984	91	26	5	52	327	5,688	4,479
December	4,429	829	97	26	9	81	169	5,640	4,386
1994 - January	3,326	631	60	25	6	46	172	4,266	3,243
February	4,054	752	102	17	4	87	237	5,253	4,117
March	4,475	1,043	94	10	9	72	184	5,887	4,492
April	3,322	774	80	24	4	46	177	4,427	3,345
May	4,199	967	85	19	6	52	149	5,477	4,216
June	4,520	1,542	135	28	6	101	122	6,454	4,863
July	4,004	715	104	11	4	45	102	4,985	3,919
August	4,350	759	93	21	3	44	229	5,499	4,346
September	4,317	773	75	26	10	44	191	5,436	4,364
October	4,379	795	99	26	2	57	223	5,581	4,415
November	4,659	1,071	115	23	5	56	257	6,186	4,763

(a) Excludes plant and equipment, caravans and trailers. (b) Financial year totals may not equal the sum of individual monthly totals due to ongoing data revisions. (c) Includes ambulances, hearses, fire engines and fire tenders, tow trucks, mobile cranes, machine mounted non-freight carrying trucks and motorised caravans.

TABLE 2 - NEW MOTOR VEHICLES (a) REGISTERED, WESTERN AUSTRALIA
SEASONALLY ADJUSTED AND TREND ESTIMATE

Period	Passenger vehicles			Other vehicles			Total		
	Original	Seasonally adjusted	Trend estimate	Original	Seasonally adjusted	Trend estimate	Original	Seasonally adjusted r	Trend estimate
1993 - September	3,861	3,812	4,013	883	940	967	4,744	4,752	4,980
October	3,674	3,724	3,998	913	897	967	4,587	4,621	4,965
November	4,203	4,018	3,986	1,158	1,116	980	5,361	5,134	4,966
December	4,429	4,097	3,986	1,042	1,020	1,001	5,471	5,117	4,987
1994 - January	3,326	3,938	4,006	768	973	1,017	4,094	4,911	5,023
February	4,054	4,259	4,037	962	990	1,019	5,016	5,249	5,056
March	4,475	3,970	4,071	1,228	1,053	1,017	5,703	5,023	5,088
April	3,322	3,822	4,082	928	990	1,015	4,250	4,812	5,097
May	4,199	4,339	4,098	1,129	1,042	1,008	5,328	5,381	5,106
June	4,520	4,168	4,130	1,812	1,501	1,002	6,332	5,669	5,132
July	4,004	4,154	4,173	879	971	997	4,883	5,125	5,170
August	4,350	4,052	4,226	920	977	1,001	5,270	5,029	5,227
September	4,317	4,276	4,281	928	1,011	1,017	5,245	5,287	5,298
October	4,379	4,461	4,338	979	981	1,040	5,358	5,442	5,378
November	4,659	4,420	4,373	1,270	1,182	1,063	5,929	5,602	5,436

(a) Excludes motor cycles, plant and equipment, caravans and trailers.

TABLE 3 - REGISTRATIONS OF NEW PLANT AND EQUIPMENT, CARAVANS AND TRAILERS

Period	Plant and equipment (a)	Caravans	Trailers				Total
			Box	Boat	Other		
PERTH STATISTICAL DIVISION							
1994	June	41	67	462	76	98	636
	July	48	44	345	73	76	494
	August	60	30	449	79	100	628
	September	51	40	367	115	105	587
	October	47	46	419	90	92	601
	November	36	49	434	144	87	665
WESTERN AUSTRALIA							
1994	June	97	102	525	123	146	794
	July	91	73	395	108	125	628
	August	100	52	504	139	166	809
	September	98	74	428	195	155	778
	October	103	71	463	174	142	779
	November	127	83	494	268	143	905

(a) Includes tractors.

**TABLE 4 — REGISTRATIONS OF NEW PASSENGER VEHICLES BY MAKE AND TARE (a) —
NOVEMBER 1994**

Make	Western Australia						Total	Per cent	Perth Statistical Division
	Tare (kg) -								
	Up to 900	901 - 1100	1101 - 1300	1301 - 1500	Over 1500	Not stated			
Audi	—	—	4	3	—	—	7	0.2	7
B.M.W.	—	—	16	10	5	—	31	0.7	30
Daewoo	—	90	—	—	—	—	90	1.9	62
Daihatsu	86	22	16	—	—	—	124	2.7	108
Eunos	—	4	4	—	—	—	8	0.2	7
Ford	88	96	97	221	505	—	1,007	21.6	815
Holden	31	72	50	611	61	—	825	17.7	658
Honda	—	36	25	35	1	—	97	2.1	94
Hyundai	—	319	93	5	—	—	417	9.0	361
Jaguar	—	—	—	1	3	—	4	0.1	4
Jeep	—	—	—	—	32	—	32	0.7	21
Lada	—	4	1	—	—	—	5	0.1	4
Land Rover	—	—	—	—	35	—	35	0.8	21
Lexus	—	—	—	—	2	—	2	—	2
Mazda	80	42	81	—	2	—	205	4.4	176
Mercedes Benz	—	—	—	15	4	—	19	0.4	19
Mitsubishi	89	50	19	312	71	—	541	11.6	445
Nissan	—	38	18	13	66	—	135	2.9	99
Peugeot	—	—	5	—	—	—	5	0.1	5
Porsche	—	—	—	2	—	—	2	—	2
Range Rover	—	—	—	—	4	—	4	0.1	4
Renault	—	1	—	—	—	—	1	—	1
Saab	—	—	6	24	—	—	30	0.6	30
Subaru	—	8	67	1	—	—	76	1.6	54
Suzuki	74	45	14	—	—	—	133	2.9	106
Toyota	1	203	208	126	240	—	778	16.7	600
Volkswagen	—	3	—	—	—	—	3	0.1	3
Volvo	—	18	—	23	2	—	43	0.9	37
Total	449	1,047	724	1,406	1,033	—	4,659	100.0	3,775

(a) See paragraph 12 of the Explanatory Notes.

TABLE 5 — REGISTRATIONS OF NEW PASSENGER VEHICLES (a) BY SELECTED MAKE AND MODEL

Make and model	November 1994		11 months to November 1994		Make and model	November 1994		11 months to November 1994	
	No.	Per cent (b)	No.	Per cent (b)		No.	Per cent (b)	No.	Per cent (b)
Ford—					Mitsubishi—				
Falcon/Fairmont	705	15.1	6,171	13.5	Magna	307	6.6	2,935	6.4
Laser	149	3.2	1,402	3.1	Lancer	140	3.0	1,120	2.5
Festiva	96	2.1	965	2.1	Pajero	60	1.3	680	1.5
Other	57	1.2	677	1.5	Other	34	0.7	459	1.0
Total	1,007	21.6	9,215	20.2	Total	541	11.6	5,194	11.4
Holden —					Nissan—				
Commodore/Calais	591	12.7	5,622	12.3	Patrol	55	1.2	632	1.4
Barina	55	1.2	1,352	3.0	Pulsar	33	0.7	606	1.3
Apollo	66	1.4	742	1.6	Bluebird	17	0.4	288	0.6
Other	113	2.4	903	2.0	Other	30	0.6	286	0.6
Total	825	17.7	8,486	18.6	Total	135	2.9	1,812	4.0
Hyundai					Toyota				
Excel	306	6.6	2,973	6.5	Camry	177	3.8	2,145	4.7
Lantra	65	1.4	418	0.9	Corolla	213	4.6	1,920	4.2
Sonata	33	0.7	388	0.9	Landcruiser	186	4.0	1,820	4.0
S	13	0.3	100	0.2	Other	202	4.3	1,957	4.3
Total	417	9.0	3,879	8.5	Total	778	16.7	7,842	17.2

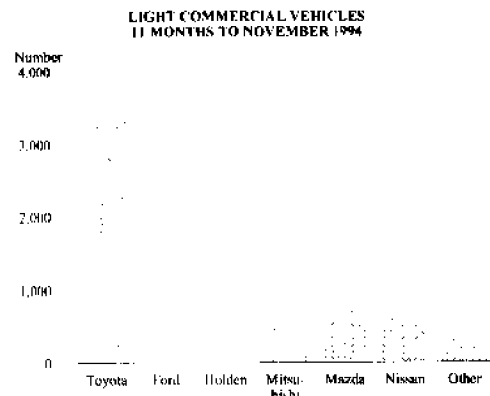
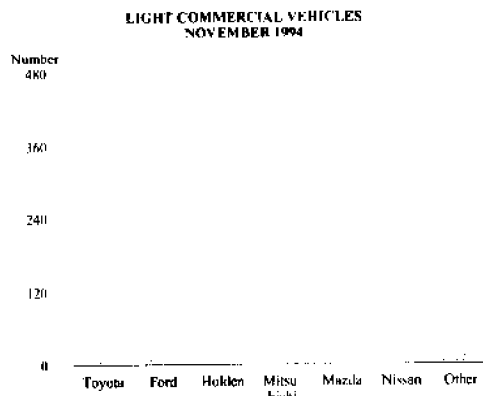
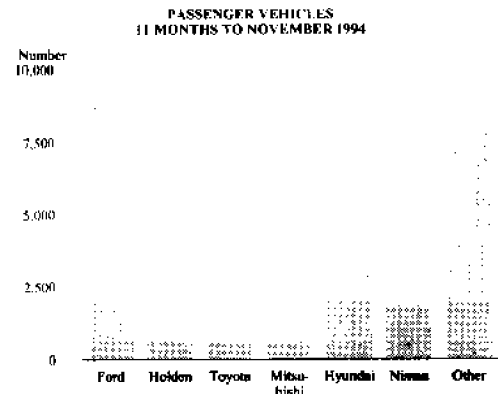
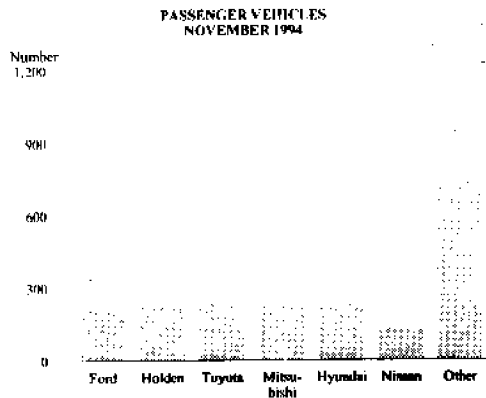
(a) See paragraph 12 of the explanatory notes. (b) Of total registrations of passenger vehicles.

TABLE 6 — REGISTRATIONS OF NEW LIGHT COMMERCIAL VEHICLES BY MAKE AND TARE (a) — NOVEMBER 1994

Make	Western Australia						Total	Per cent	Perth Statistical Division
	Tare (kg) -								
	Up to 900	901 - 1100	1101 - 1300	1301 - 1500	Over 1500	Not stated			
Asia	—	—	5	1	—	—	6	0.6	4
Daihatsu	1	—	—	—	—	—	1	0.1	1
Ford	—	—	25	105	36	—	166	15.5	117
Holden	—	—	15	120	79	—	214	20.0	135
Land Rover	—	—	—	—	3	—	3	0.3	1
Mazda	—	—	18	26	33	—	77	7.2	47
Mitsubishi	—	—	58	27	30	—	115	10.7	77
Nissan	—	—	10	14	49	—	73	6.8	38
Suzuki	5	—	—	—	—	—	5	0.5	1
Toyota	1	7	66	106	226	—	406	37.9	223
Volkswagen	—	—	—	2	3	—	5	0.5	5
Total	7	7	197	401	459	—	1,071	100.0	649

(a) See paragraph 13 of the Explanatory Notes.

REGISTRATIONS OF NEW MOTOR VEHICLES (a)



(a) Data are compiled via the new processing system. See paragraph 2 of explanatory notes.

**TABLE 7 — REGISTRATIONS OF NEW RIGID AND ARTICULATED TRUCKS BY MAKE —
NOVEMBER 1994**

Western Australia												Perth Statistical Division
Rigid trucks							Articulated trucks					
Make	G.V.M. (tonnes) (a) -						Total	Per cent	Total	Per cent		
	Up to 4	Over 4 up to 8	Over 8 up to 12	Over 12 up to 16	Over 16 up to 30	Over 30					Not stated	
Daihatsu	—	2	—	—	—	—	2	1.7	—	—	2	
Ford	—	2	—	1	—	—	3	2.6	1	4.3	3	
Freightliner	—	—	—	—	—	—	—	—	2	8.7	2	
Hino	—	1	8	4	—	—	13	11.3	—	—	9	
International	—	—	—	1	9	—	10	8.7	1	4.3	7	
Isuzu	—	11	5	5	2	—	23	20.0	—	—	19	
Kenworth	—	—	—	—	—	—	—	—	2	8.7	1	
Mack	—	—	—	—	1	—	1	0.9	1	4.3	2	
MAN	—	—	1	—	—	—	1	0.9	—	—	1	
Mazda	—	5	—	—	—	—	5	4.3	—	—	4	
Mercedes Benz	—	—	—	1	5	—	6	5.2	3	13.0	7	
Mitsubishi	—	18	4	9	2	—	33	28.7	—	—	21	
Scania	—	—	—	—	—	—	—	—	1	4.3	1	
Toyota	—	12	—	—	—	—	12	10.4	—	—	11	
UD Nissan	—	—	—	1	—	—	1	0.9	1	4.3	2	
Volvo	—	—	—	—	5	—	5	4.3	9	39.1	10	
Western Star	—	—	—	—	—	—	—	—	2	8.7	1	
Total	—	51	18	22	24	—	115	100.0	23	100.0	103	

(a) Gross vehicle mass refers to the permitted aggregate of the tare of and the load borne by the vehicle.

**TABLE 8 — REGISTRATIONS OF NEW VEHICLES BY FUEL TYPE, NUMBER OF CYLINDERS AND
BODY TYPE (a) — NOVEMBER 1994**

Number of cylinders	Passenger vehicles		Light commercial vehicles		Trucks and buses		Total	
	Number	Per cent	Number	Per cent	Number	Per cent	Number	Per cent
PETROL								
3	55	1.2	1	0.1	—	—	56	1.1
4	2,493	55.5	517	75.4	4	44.4	3,014	58.1
5	16	0.4	3	0.4	—	—	19	0.4
6	1,780	39.6	141	20.6	2	22.2	1,923	37.1
8	140	3.1	20	2.9	3	33.3	163	3.1
Other and unknown	6	0.1	4	0.6	—	—	10	0.2
Total	4,490	100.0	686	100.0	9	100.0	5,185	100.0
DIESEL								
4	31	19.7	221	57.7	59	31.1	311	42.6
6	126	80.3	162	42.3	126	66.3	414	56.7
8	—	—	—	—	5	2.6	5	0.7
Total	157	100.0	383	100.0	190	100.0	730	100.0
GAS								
4	—	—	2	100.0	—	—	2	14.3
6	12	100.0	—	—	—	—	12	85.7
Total	12	100.0	2	100.0	—	—	14	100.0
ALL FUEL TYPES								
3	55	1.2	1	0.1	—	—	56	0.9
4	2,524	54.2	740	69.1	63	31.7	3,327	56.1
5	16	0.3	3	0.3	—	—	19	0.3
6	1,918	41.2	303	28.3	128	64.3	2,349	39.6
8	140	3.0	20	1.9	8	4.0	168	2.8
Other and unknown	6	0.1	4	0.4	—	—	10	0.2
Total	4,659	100.0	1,071	100.0	199	100.0	5,929	100.0

(a) Excludes motor cycles, plant and equipment, caravans and trailers.

TABLE 9 — REGISTRATIONS OF NEW MOTOR CYCLES BY MAKE AND CUBIC CAPACITY OF ENGINE — NOVEMBER 1994

Make	Western Australia							Total	Per cent	Perth Statistical Division
	Cubic centimetres -									
	Up to 50	51 - 150	151 - 250	251 - 500	501 - 750	Over 750	Not stated			
B.M.W.	—	—	—	—	—	6	—	6	2.3	6
Ducati	—	—	—	—	5	4	—	9	3.5	7
Harley Davidson	—	—	—	—	—	38	—	38	14.8	28
Honda	6	80	4	—	18	11	—	119	46.3	105
Husqvarna	—	—	—	—	3	—	—	3	1.2	—
Kawasaki	—	—	11	—	6	9	—	26	10.1	11
KTM	—	—	1	2	—	—	—	3	1.2	2
Motoguzzi	—	—	—	—	—	5	—	5	1.9	3
Suzuki	2	—	5	—	4	2	—	13	5.1	11
Triumph	—	—	—	—	—	3	—	3	1.2	2
Yamaha	3	—	10	1	5	12	—	31	12.1	18
Other and unknown	—	—	—	1	—	—	—	1	0.4	1
Total	11	80	31	4	41	90	—	257	100.0	194

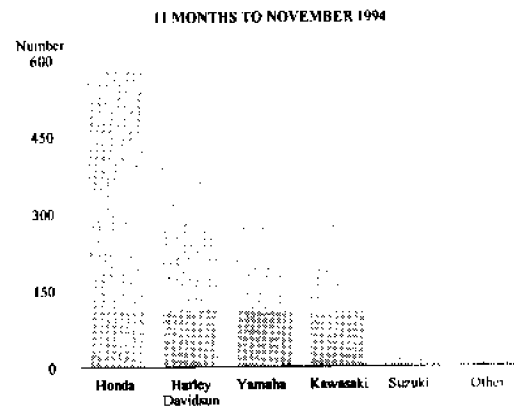
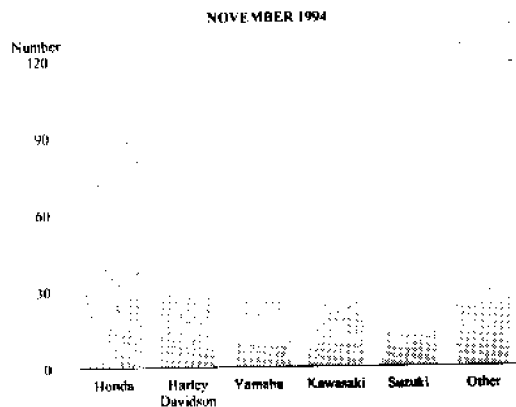


TABLE 10 — MOTOR VEHICLES (a) ON REGISTER, WESTERN AUSTRALIA ('000)

At 30 June	Passenger vehicles	Light commercial vehicles	Rigid trucks	Articulated trucks	Non-freight carrying trucks (b)	Buses	Motor cycles	Total	Perth Statistical Division
1989	708.3	140.9	78.6	5.3	9.0	7.9	36.3	986.2	719.1
1990	746.2	146.7	83.8	5.7	9.3	8.6	37.5	1,037.7	759.7
1991	764.2	149.1	86.2	5.6	9.3	9.0	38.2	1,061.6	774.9
1992	781.6	150.1	87.9	5.6	9.3	9.5	37.8	1,081.7	791.2
1993	803.7	153.3	91.1	5.8	9.3	9.8	37.9	1,111.0	812.1
1994	827.8	156.9	95.2	6.1	9.3	9.9	37.1	1,142.4	835.9

(a) Excludes plant and equipment, caravans and trailers. (b) Includes ambulances, hearses, fire engines and fire tenders, tow trucks, mobile cranes, machine mounted non-freight carrying trucks and motorised caravans.

EXPLANATORY NOTES

Introduction

This publication contains detailed information regarding registrations of new motor vehicles, motor cycles, plant and equipment, caravans and trailers. Details of the number of motor vehicles on register are also included.

2. The statistics in this publication are based, from July 1991 onwards, on new processing procedures using the new Vehicle Identification Number (VIN) introduced by motor vehicle registration authorities from July 1990. The VIN system allows more accurate identification and classification of newly registered vehicles. As a result, data processed on this system are not strictly comparable with those processed on the old system.

3. Both the old and new series have been compiled for the period between December 1990 and July 1991. Detailed statistics on both bases are available on request.

Scope and coverage

4. Vehicle licensing in Western Australia is the responsibility of the Police Department and a number of local government authorities performing licensing functions or acting as collection agents on behalf of the Department.

5. The statistics in this bulletin have been prepared from data made available by licensing authorities and reflect information as recorded in registration documents. Delays in the receipt of some registrations data have meant that new motor vehicle registration statistics for a particular month include vehicles registered prior to that month.

6. Registrations of new motor vehicles relate to factory-new vehicles registered for the first time.

7. The statistics include vehicles with diplomatic and consular plates and State and Commonwealth Government owned vehicles other than those belonging to the defence services.

8. The statistics exclude any vehicles which will not be used on public roads such as tractors (particularly the agricultural type), plant and equipment and motor vehicles used solely on farms, in mines or in National Parks, etc. as well as recreational vehicles such as trail bikes or sand dune buggies.

Vehicle Identification Number (VIN)

9. The Vehicle Identification Number (VIN) uniquely identifies each vehicle. Embedded within this number are details of make and model together with other relevant information concerning the vehicle. The VIN is now collected by the Police Department at the time each new vehicle is registered. The VIN is passed on to the Australian Bureau of Statistics (ABS) as part of the New Motor Vehicles Registrations record.

Vehicle classification

10. The decoding of the VIN has resulted in better identification of each vehicle's body type and consequently classification of vehicles to particular categories.

11. Small passenger carrying vans such as minibuses are now consistently classified as passenger vehicles. Under the old system, these could have been classified as

cars, station wagons or buses. Cab-chassis vehicles, which were previously classified to small trucks, are now consistently classified to light commercial vehicles. In addition, tractors are no longer classified separately. They are now included in the plant and equipment category.

Vehicle type definitions

12. *Passenger Vehicles.* Vehicles constructed primarily for the carriage of less than 10 passengers (including the driver). Included are cars, station wagons, 4WD passenger vehicles and forward control passenger vehicles.

13. *Light Commercial Vehicles.* Vehicles constructed primarily for the carriage of goods and do not exceed 3.5 tonnes gross vehicle mass (GVM). Included are utilities, panel vans, cab-chassis and forward control vehicles (whether 4WD or not).

14. *Rigid Trucks.* Vehicles constructed primarily for load carrying with a gross vehicle mass (GVM) exceeding 3.5 tonnes. Included are normal rigid trucks with a tow bar, draw bar or other non-articulated coupling on the rear for use with a trailer or dolly.

15. *Articulated Trucks.* Vehicles constructed primarily for load carrying consisting of a prime mover having no significant load carrying area but with a turn table device which can be linked to a trailer. With or without a trailer the gross combination mass (GCM) will exceed 3.5 tonnes.

16. *Non-freight Carrying Trucks.* Includes specialist vehicles such as ambulances or mobile cranes or vehicles fitted with special purpose equipment and having no goods carrying capacity.

17. *Buses.* Includes all passenger vehicles having more than nine seats, including the driver.

Seasonal adjustment and trend estimation

18. Original, seasonally adjusted and trend estimate series for registrations of new motor vehicles are shown in Table 2. The two component series 'Passenger vehicles' and 'Other vehicles' are each adjusted separately and then summed to derive total seasonally adjusted and trend registrations. In the seasonally adjusted series, account has been taken of normal seasonal factors and 'trading day' effects (arising from the varying numbers of Sundays, Mondays, Tuesdays, etc. in the month) and the effect of movement in the date of Easter which may, in successive years, affect figures for different months.

19. Seasonally adjusted statistics should not be regarded as in any way definitive. In interpreting particular seasonally adjusted statistics it is important to bear in mind the methods by which they have been derived and the limitations to which the methods used are subject.

20. Seasonal adjustment is a means of removing the estimated effects of normal seasonal variation from the series so that the effects of other influences on the series may be more clearly recognised. Seasonal adjustment procedures do not aim to remove the irregular or non-seasonal influences which may be present in any particular months, such as the effect of introducing new models or of industrial disputes. Irregular influences that are highly volatile can make it difficult to interpret the

movement of the series even after adjustment for seasonal variation.

21. The seasonally adjusted series can, however, be smoothed to reduce the impact of the irregular component in the adjusted series. This smoothed seasonally adjusted series is called a trend estimate. The trend estimates of motor vehicle registration statistics are shown in Table 2 and have been derived by applying a 13-term Henderson-weighted moving average to the seasonally adjusted series.

22. While the technique enables trend estimates for the latest period to be produced, it does result in revisions to the trend estimate for the most recent months as additional observations become available. There may also be revisions as a result of changes in the original data, and as a result of the re-estimation of the seasonal factors.

23. Users may wish to refer to the ABS Information Papers, *A Guide to Interpreting Time Series - Monitoring 'Trends' - An Overview* (1348.0), *A Guide to Smoothing Time Series - Estimates of 'Trend'* (1316.0) and *Time Series Decomposition - An Overview* (1317.0) for more detailed information on smoothing of seasonally adjusted time series data.

Vehicles on register

24. The number of vehicles on register at a given date are those for which fees were paid up for a period which includes the reference date.

Unpublished data and related publications

25. The ABS may also make available on request certain unpublished motor vehicle registrations data. This data includes make and small area breakdowns of vehicles on register figures. A charge may be made for providing unpublished information.

26. Other ABS publications which may be of interest include:

AUSTRALIA	Catalogue No
Registrations of New Motor Vehicles (Preliminary) (Monthly)	9301.0
Motor Vehicle Registrations (monthly)	9303.0
Motor Vehicle Registrations (annual)	9304.0
Motor Vehicle Census (triennial)	9309.0

27. Current publications produced by the ABS are listed in the *Catalogue of Publications and Products* (1101.0). The ABS also issues, on Tuesdays and Fridays, a *Publications Advice* (1105.0) which lists publications to be released in the next few days. The *Catalogue* and *Publications Advice* are available from any ABS Office.

Symbols and other usages

---	nil or rounded to zero
r	figure or series revised since last issue
n.a.	not available
—	break in continuity of series

28. Where figures have been rounded, discrepancies may occur between sums of the component items and totals.

Electronic services

DISCOVERY

The ABS intends discontinuing its statistical information service on DISCOVERY. Please contact Peter Davidson (Phone 06 252 6684) to discuss possible alternatives for acquiring statistics or if you wish to comment on this proposal.

PC-AUSSTATS

Thousands of up-to-date time series are available on this ABS on-line service. For further information phone the PC-Ausstats Help Desk on (06) 252 6017.

DIAL-A-STATISTIC

Phone 0055 86400 from anywhere, any time for the latest available data on the Consumer Price Index, National Accounts, Balance of Payments, Labour Force, Average Weekly Earnings, and Estimated Resident Population.

P. C. KELLY
Deputy Commonwealth Statistician
and Government Statistician

